



ALL PRODUCTS CATALOG





THE CENTRIA DIFFERENCE

From conception to installation, CENTRIA high-performance metal enclosures are engineered, tested, and refined to perfection for architecture that excels in both the way that it looks and works.

Think high-performance, high-aesthetic insulated metal wall and roof panels that provide superior air, thermal, water, and vapor protection, all in a single component and available in the widest range of materials, colors, and finishes. Then, to this, add options for windows, Nova Fins, sunshades, daylighting panels, and louvres, each engineered for seamless panel integration for the ultimate in total building envelope performance.

At CENTRIA, we design to perform so that you can do the same.

SUSTAINING THE NUCOR LEGACY

As North America's most diversified steel and steel products group, Nucor is transforming the landscape of sustainable building practices one project at a time through the power of steel.

A Nucor Company, CENTRIA is proud to be a part of that legacy, continually working to reduce our carbon footprint through innovative, responsible design practices and an unwavering commitment to sustainable manufacturing.



SCAN TO LEARN MORE



1

SIMPLIFICATION

With a nationwide supplier and installers network, CENTRIA's comprehensive single- and dual-component wall systems are engineered to provide simplified, superior performance with the added benefit of single-source responsibility.



PERFORMANCE

CENTRIA building envelope systems perform at the industry's highest levels in thermal, air, water, and vapor control, fire resistance and resiliency categories available with extended warranties, including an exclusive single-source performance warranty.



SUSTAINABILITY

By combining primarily EAF-produced steel* with exceptional energy efficiency and the reduced material consumption that comes with an all-in-one building envelope solution, CENTRIA IMPs stand out as a premier option for minimizing greenhouse gas (GHG) emissions.



INTEGRATION

Every component comprising a CENTRIA building envelope – including wall panels, windows, Nova Fins, sunshades, daylighting panels, and louvers – is engineered for precision integration to maintain critical air, thermal, water, and vapor controls, all while enhancing building aesthetics.

*As of 2024, CENTRIA is committed to sourcing 100% EAF steel, except for stainless steel, PVC-coated steel, and Igloo White in our Hamilton plant



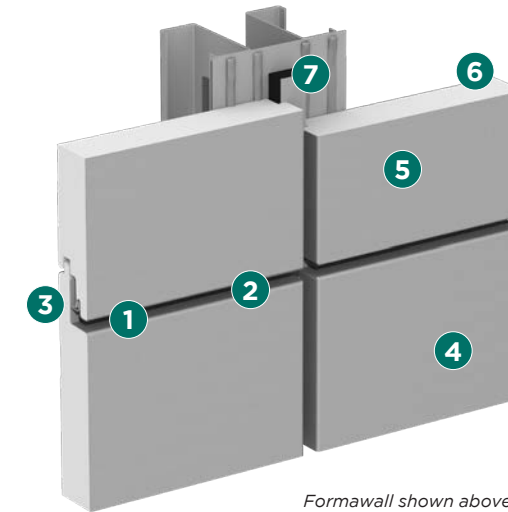
ARTFUL SCIENCE

TWO HIGH-PERFORMANCE BUILDING ENCLOSURE PLATFORMS THAT MEET YOUR VISION



SINGLE-COMPONENT IMP SYSTEMS

CENTRIA IMP Systems, Formawall®, Versawall®, Versapanel®, and TotalClad™ provide a single-component building enclosure solution with a wide range of design options. In just a single installation step, these IMP (insulated metal panel) systems provide finished cladding along with all hygrothermal controls – including continuous insulation and air barriers.



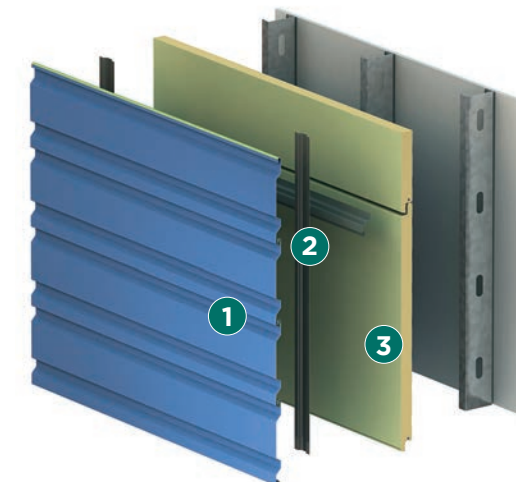
Formawall shown above

FORMAWALL BENEFITS

1. Pressure-equalized side joint with concealed sealant protects against water penetration
2. Variable reveal sizes, 1/2" [13mm] to 6" [152mm]
3. Concealed clips and fasteners provide a sleek exterior appearance with proven long-term performance
4. High-performance coatings offer long-term coverage, minimal maintenance and excellent color selection for your building's exterior
5. Durable metal skins provide impact resistance, strength for increased span capability and a built-in vapor barrier on the interior liner
6. Insulating foam core, factory foamed-in-place, provides a thermally efficient exterior wall in either 2" [51mm], 2-1/2" [64mm] or 3"-T [76mm] thickness
7. Unique Insulated Metal Vertical (IMV) Joint; available with either the standard backer flash or Formawall Seal Plate (shown)

SINGLE-COMPONENT IMP BACKUP WALL + RAINSCREEN CLADDING

Rainscreen wall design requires a backup wall, located behind the outer rainscreen cladding, to provide all hygrothermal controls. CENTRIA pioneered MetalWrap® to provide a single-component IMP (insulated metal panel) backup wall solution for rainscreen walls. MetalWrap replaces complex multi-component backup wall assemblies and accommodates virtually any non-combustible rainscreen cladding, including masonry.



1. Exterior rainscreen
2. Subgirts
3. MetalWrap with integral attachment system

FORMAWALL®

THE COMPLETE HIGH-PERFORMANCE BUILDING ENCLOSURE SYSTEM

Formawall, CENTRIA's flagship building enclosure system, provides architects unprecedented design possibilities in a single-component IMP (insulated metal panel). Combined with Formawall system's legendary and maintenance-free hygrothermal performance - thermal, air, water, and vapor protection - architects are assured a building enclosure that looks as beautiful as it performs, all in a single remarkable component. Plus, Formawall is a complete enclosure system that includes integrated windows, sunshades, daylighting panels, and louvers that are engineered to integrate seamlessly with Formawall panels.

FOAMED IN PLACE

Unlike other IMPs, manufactured by adhering rigid foam board to metal facers, Formawall panels are foamed in place, where liquid foaming components are combined as metal facers are positioned. The liquid insulating foam expands and sets into a solid state, filling all voids and producing a remarkably strong and lasting metal-to-insulation bond. This results in maximum panel insulation value, strength, and flatness.

HALOGEN-FREE AND ENHANCED FIRE RESISTANCE

Halogens are toxic chemicals that negatively impact the environment and the human body. Unlike traditional polyisocyanurate (PIR) insulation, CENTRIA's proprietary PIR formulation used with Formawall is halogen-free. Equally important, the Formawall system has been extensively tested to NFPA 285 to validate its fire performance.

SOPHISTICATED JOINERY

Formawall IMPs feature a distinctive panel joinery for preventing water penetration. This joinery is uniquely designed to combat the physical forces that cause water penetration including air pressure drop, kinetic energy, capillary action, gravity, and surface tension. Combined with Formawall panel's full perimeter concealed seals, Formawall system ensures a long-lasting weathertight building enclosure.



FIVE FORMS, UNLIMITED COMBINATIONS

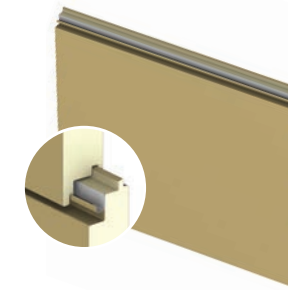
First, select your panel thickness based upon your building's thermal requirements. Then, freely mix and match five different panel forms to create imaginative building enclosures with varying articulations, rhythms, and textures. Formawall panels can be curved and installed both horizontally and vertically, and panels are available in thicknesses of 2", 2.5" or 3".

FWDS

Lengths: Embossed, Flat - 37' [11.3m]
 Embossed, Striated - 37' [11.3m]
 Smooth, Flat - 16' [4.9m]
 Smooth, Striated - 20' [6.1m]
 304 Stainless, Flat - 16' [4.9m]

Widths from 10" - 40"

**Thickness/R-Value/
 U-Factor @ 35°F:**
 2"/R16/U0.069
 2.5"/R20.1/U0.056
 3"/R24.1/U0.045

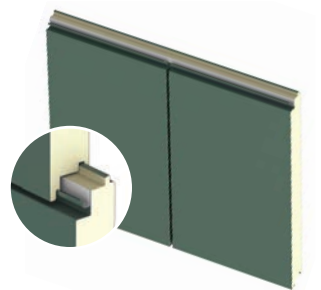


FWGX

Lengths: Smooth, Flat - 16' [4.9m]
 Smooth, Striated - 20' [6.1m]
 Embossed, Flat - 20' [6.1m]
 Embossed, Striated - 20' [6.1m]

Widths from 10" - 40"

**Thickness/R-Value/
 U-Factor @ 35°F:**
 2.5"/R20.1/U0.056
 3"/R24.1/U0.045

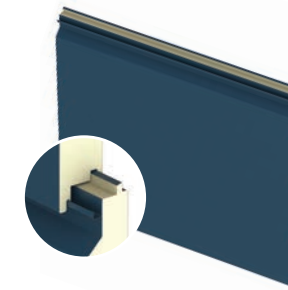


DS58

Lengths: Smooth - 16' [4.9m]
 Smooth Striated - 20' [6.1m]
 Embossed Striated - 37' [11.3m]
 Embossed - 37' [11.3m]

Widths from 12" - 40"

**Thickness/R-Value/
 U-Factor @ 35°F:**
 2"/R14.1/U0.071
 2.5"/R17.7/U0.057
 3"/R21.7/U0.046

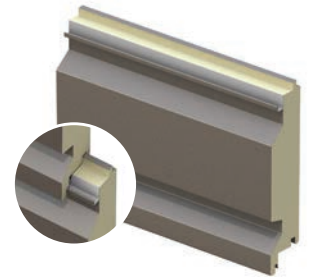


DS59

Lengths: Smooth - 20' [6.1m]
 Embossed - 37' [11.3m]

Width 12"

**Thickness/R-Value/
 U-Factor @ 35°F:**
 2"/R11.3/U0.089
 2.5"/R15.3/U0.065
 3"/R18.9/U0.053

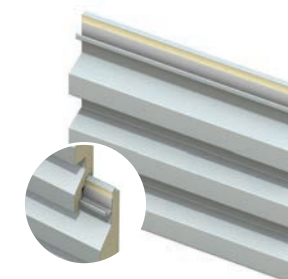


DS60

Lengths: Smooth - 20' [6.1m]
 Embossed - 37' [11.3m]

Width 12"

**Thickness/R-Value/
 U-Factor @ 35°F:**
 2"/R9.6/U0.104
 2.5"/R13.3/U0.075
 3"/R17.0/U0.059



FEATURES

- Horizontal or vertical installation
- Halogen-free PIR foam insulation
- Trimless ends and folded corners
- Galvanized facers in a variety of gauges
- Single-component exterior wall system that eliminates the need for separate sheathing, air barrier, and insulation
- Fully NFPA 285 tested and compliant
- Optional thermally improved windows, sunshades, louvers, and daylighting panels with joinery engineered to seamlessly integrate with wall panels

Visit CENTRIA.com for complete technical details.

THE FIRST CHOICE

See why architects and owners choose legendary Formawall for their most important buildings.



FORMAWALL GALLERY

Explore examples of buildings enclosed with Formawall.



FORMAWALL® INTEGRATED COMPONENTS

Windows, daylighting panels, sunshades, and louvers: CENTRIA offers all to ensure that your building enclosure performs with maximum efficiency.

INTEGRATED FORMAVUE® WINDOWS

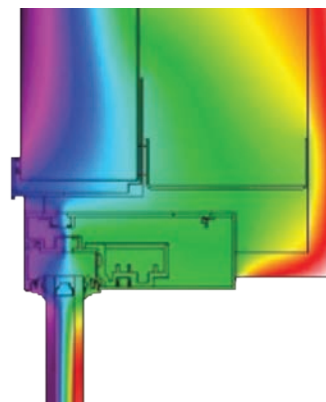
Engineered to integrate with Formawall panels, attractive and highly durable Formavue windows incorporate a complete thermal break and head and sill joinery that marry seamlessly with Formawall panels to ensure air, water, and thermal barrier continuity. Features include:

- Eight models to meet design and performance criteria
- Punch, Strip, or Stack Rail design options
- Field or shop assembled options
- Exterior or interior glazing options

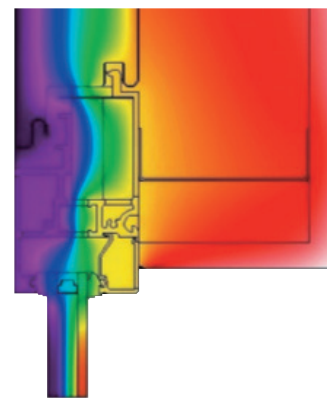


Intelligently integrated window joinery eliminates time-consuming window/wall detailing. Formavue windows are available in punch, strip, and stacked configurations to match your vision.

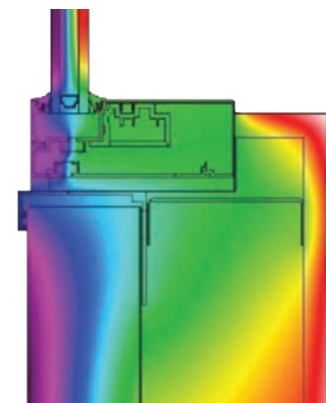
Non-integrated Head



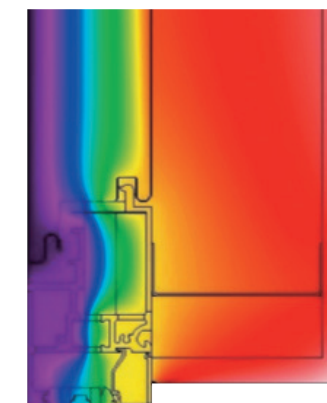
Integrated Formavue® Head



Non-integrated Sill



Integrated Formavue® Sill



These thermographs prove that Formavue windows significantly increase thermal performance at the window wall interface compared to non-integrated windows.

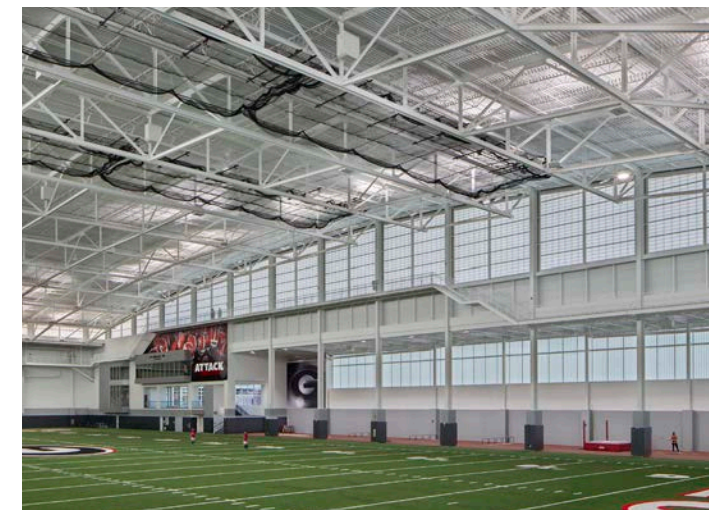
INTEGRATED CS SUNSHADES

Designed in partnership with Construction Specialties, the leader in sunshades, these sunshades install quickly and directly to Formawall panels and windows to maintain continuity of critical envelope weather controls. Reducing solar heat gain and enhancing occupant visual and thermal comfort, these top-quality sunshades come in a wide range of sizes and blade shapes to perfectly match your building's aesthetics and window orientation.



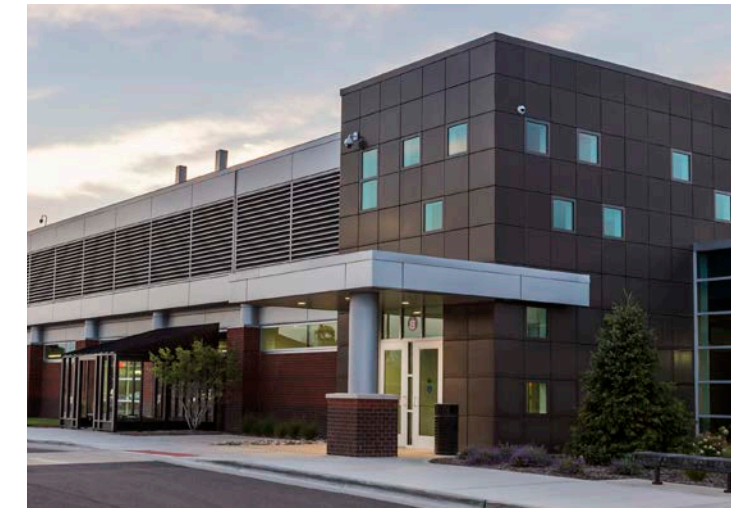
INTEGRATED DAYLIGHTING PANELS

Facilitating seamless integrations, our Formawall panels are designed to incorporate translucent daylighting solutions effortlessly. Allowing glare-free natural daylight to penetrate deep into interiors is beneficial to occupants and reduces energy consumption for electric lighting. With joinery engineered for fast, easy, and efficient integration, Formawall enables the use of daylighting to filter natural light into a building while maintaining Formawall's weathertight barriers and high insulation values.



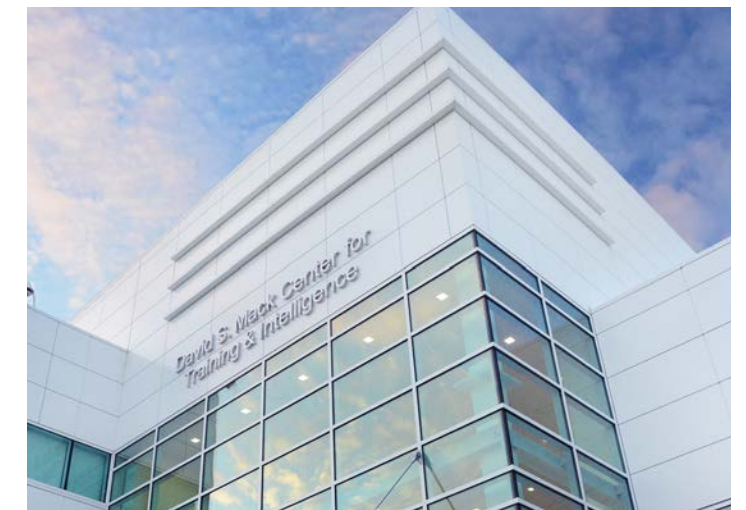
INTEGRATED CS LOUVERS

CENTRIA designed these louvers in partnership with Construction Specialties to feature Formawall-integrated joinery for quick and easy installation and maximum weathertight performance. Available in fixed, drainable, storm-resistant, active, and inactive models, Integrated CS Louvers allow designers to employ an otherwise utilitarian component as an aesthetic feature of a façade.



INTEGRATED NOVA FINS

Whether you choose to custom design a fin profile or select from the purpose-driven CENTRIA Fins Collection, CENTRIA custom fabricated metal fins add the perfect finishing touch to your exterior wall design. Developed for total design compatibility, CENTRIA fins are available in a variety of finish options and seamlessly integrate with CENTRIA's Formawall Dimension Series to create a unique, sleek building façade.



FORMAVUE
BROCHURE



Download the Formavue windows brochure today.





VERSAWALL® & VERSAPANEL®

INSULATED METAL PANELS IDEAL FOR COMMERCIAL/INDUSTRIAL APPLICATIONS

With their long lengths, light weight and versatility, Versawall and Versapanel offer reduced framing costs and remarkable strength, along with outstanding weather resistance, insulation and moisture protection. The long panel lengths make Versawall and Versapanel IMPs perfect for low- and mid-rise buildings, such as shopping centers, schools and warehouses. Versapanel's standing seam also creates an impactful design element when used as roofing or as wall cladding.



VERSAWALL®



VERSAPANEL®

VERSAWALL V

Vertical Wall Installation

Lengths: Embossed Planked, or Striated 6' - 52'

Widths: 30" and 36"

Thickness/R-Value/U-Factor @ 35° F:

2"/R16.7/U0.063

2.75"/R23/U0.046

4"/R33.5/U0.034

Exterior Face: Striated or planked with an embossed finish



VERSAWALL V+

Vertical Wall Installation

Lengths: Embossed Flat - Dark Colors 6' - 21'

Embossed Flat - Light Colors 6' - 37'

Smooth, Flat, Planked, or Striated 6' - 20'

Widths: 30" and 36"

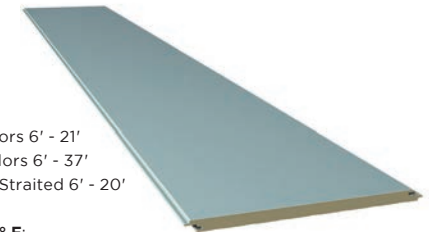
Thickness/R-Value/U-Factor @ 35° F:

2"/R16.7/U0.063

2.75"/R23/U0.046

4"/R33.5/U0.034

Exterior Face: Flat with an embossed finish; Flat, striated, or planked with a smooth finish



VERSAWALL H+

Horizontal Wall Installation

Lengths: Embossed Flat - Light Colors 6' - 37'

Embossed Flat - Dark Colors 6' - 21'

Smooth, Flat 6' (1.8m) - 20' (6.1m)

Widths: 30" and 36"

Thickness/R-Value/U-Factor @ 35° F:

2"/R16.7/U0.065

3"/R25.1/U0.043

Exterior Face: Flat with an embossed or smooth finish



VERSAPANEL®

Vertical Wall Installation

Roof Installation with Batten Cap

Lengths: Embossed, Planked 6' - 52'

Widths: 36"

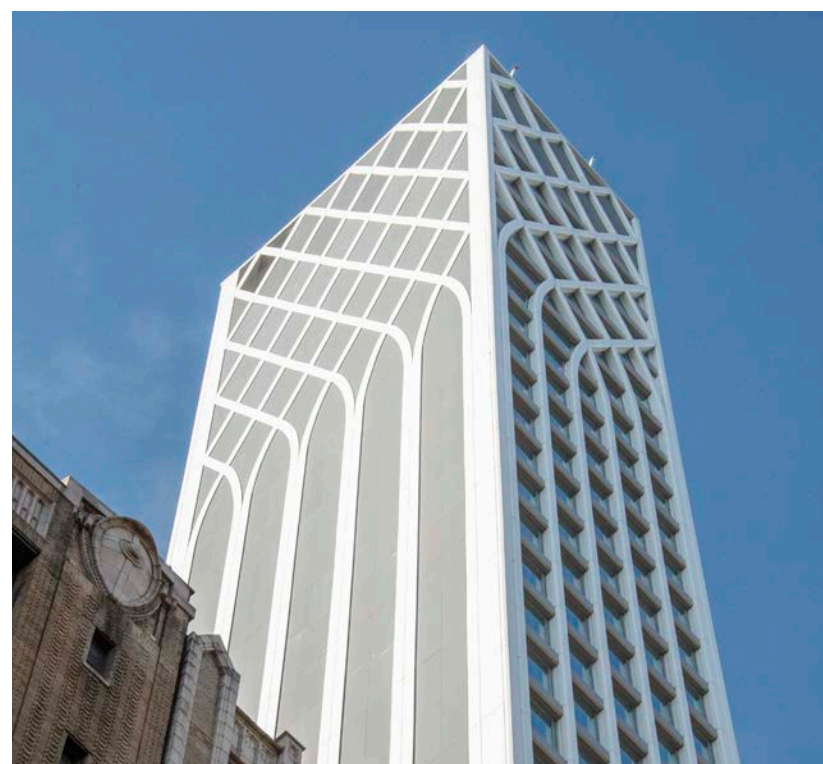
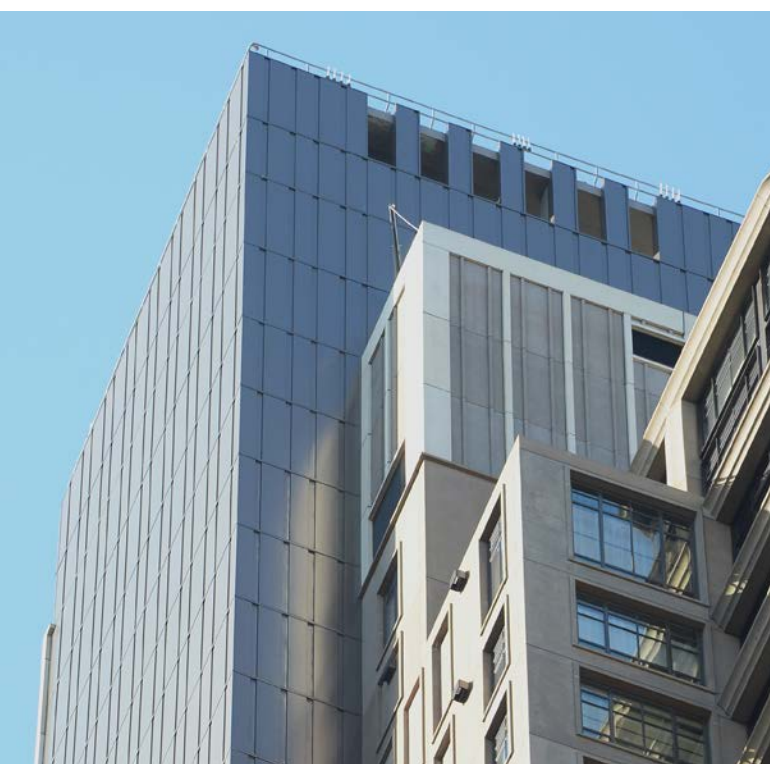
Thickness/R-Value/U-Factor @ 35° F:

1.75"/R14.7/U0.067

2.5"/R20.9/U0.048

4"/R33.5/U0.030

Exterior Face: Planked with an embossed finish



FEATURES & BENEFITS

- Lightweight single-component panels reduce installation costs
- Increased span capability reduces support steel requirements
- Thermal break between face and liner saves energy
- Factory-applied panel joint sealant, together with field-applied sealant, create an air and vapor barrier that provides outstanding weather resistance
- Versawall can be used for interior partitions
- Available with factory-formed sheet metal flashing or extruded aluminum trim
- Versapanel's snap-on cap conceals joint for a seamless appearance (required on roofs)

Visit CENTRIA.com for complete technical details.



METALWRAP® & RAINSCREEN CLADDING

THE ULTIMATE DUAL-COMPONENT BUILDING ENCLOSURE SOLUTION

CENTRIA identified many issues associated with multi-component backup wall assemblies used in traditional rainscreen wall design and developed MetalWrap as the ultimate solution. Where traditional rainscreen design relies on the separate components of sheathing, air barrier, water barrier, and continuous insulation; MetalWrap combines these barriers into just a single component: an IMP system that's been engineered for use as a backup wall, complete with attachment hardware for virtually any form of cladding - including masonry. MetalWrap installs faster, reduces material usage, and provides a single point of responsibility for enclosure performance.

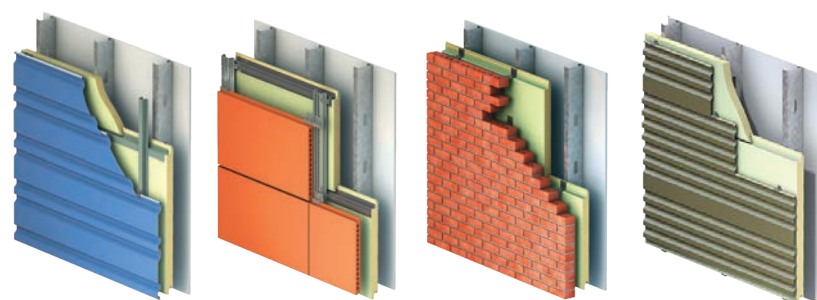


METALWRAP®



METALWRAP®
LONG SPAN

METALWRAP™ INTEGRATED SERIES



MR-100

Highly versatile for use with most rainscreen cladding

MR-300

Designed to accommodate modular rainscreens

MASONRY

Provides tie-backs for fast connection to masonry walls

CLIPS

An affordable option for lightweight, single-skin metal panels

CONTROL FEATURES

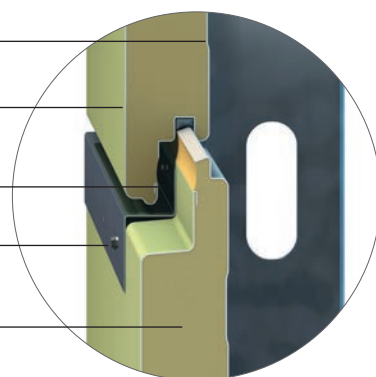
Metal liner provides air and vapor barrier

Durable metal drain plane

Pressure-equalized horizontal joinery

Integrated attachment system (MR-100 Shown)

R14 or R21 tested assembly insulation



Horizontal Wall Installation

Lengths: 12' and 20'

Widths: 32" and 36"

Thickness/R-Value/U-Factor @ 35° F:

2"/R16.7/U0.063

3"/R25.1/U0.042

Substrate: AZ 50 Galvalume

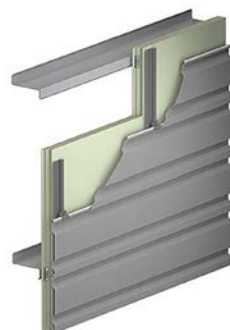
Core: Polyisocyanurate

Face & Liner Gauge: 29/29 epoxy with primer face/liner

FEATURES & BENEFITS

- Provides an air barrier, vapor and moisture control, drain plane and thermal performance in one composite component
- Virtually eliminates water penetration, air infiltration and thermal bridges
- Encloses the building faster in all weather conditions
- For all building types in all climates
- Flexibility to be installed both horizontally and vertically
- Integrated assembly thermal performance achieves U-factors that meet or exceed IECC code requirements
- Meets requirements for NFPA 285 multistory fire test
- Fully tested for air and water infiltration
- Attachment systems offer enhanced flexibility, faster installation, and superior thermal performance throughout the joint
- Works with all types of non-combustible exterior cladding materials

METALWRAP™ LONG SPAN SERIES



Designed to span up to 6' on center, especially suited for pre-engineered metal buildings

Vertical or Horizontal Wall Installation

Lengths: 12' and 20'

Widths: 30" and 36"

Thickness/R-Value/U-Factor @ 35° F:

2"/R16.7/U0.063

2.75"/R23/U0.046

4"/R33.5/U0.034

Substrate: G-90 Galvanized Steel

Core: Polyisocyanurate

Face & Liner Gauge: 22/26 epoxy with primer face/liner

METALWRAP® INTEGRATED ENCLOSURE COMPONENTS FOR INSTALLATION EASE, SUPERIOR PERFORMANCE, AND AESTHETIC APPEAL

Rounding out CENTRIA's MetalWrap offering are two component options that help to ensure hygrothermal control continuity and to speed installation. These components include MetalWrap-integrated windows and CS Inactive Louvers.

INTEGRATED WINDOWS

CENTRIA MetalWrap-integrated windows further enhance air and water performance and reduce risks for architects and owners. These windows feature wide thermal breaks aligned with the panel insulation as well as additional insulation in the head of the window frame.



INTEGRATED INACTIVE LOUVERS

Developed in conjunction with Construction Specialties, CS Inactive Louvers are designed for large areas where louvers are an architectural feature. Utilizing storm resistant MW-7315 front blades over MetalWrap panels, the product creates an inactive louver to blend perfectly with active louvers while maintaining hygrothermal continuity. Both the attachment system and the panel face are painted black, providing a seamless visual transition between the active and inactive louvers.



TOTALCLAD™ & TOTALCLAD™ MW

DURABLE AND ENERGY-EFFICIENT

TotalClad IMPs with polyurethane foam insulation cores are as durable as they are cost-efficient. Concealed clips and fasteners at panel joints offer a clean, uninterrupted aesthetic. Lightweight TotalClad IMPs install vertically as walls for long, sleek sight lines. They're also an excellent choice for interiors and are available in various lengths, thicknesses, profiles, and finishes.



TOTALCLAD™



TOTALCLAD™ MW

CONCEPT SERIES

ONE UNIQUE GEOMETRY, INFINITE COMBINATIONS

Originally developed at the request of legendary Japanese architect Fumihiko Maki, Concept Series takes the platform for an asymmetric, trapezoidal rib profile to the next level. Concept Series back-ventilated, concealed fastener rainscreen panels are unmatched in their strength and combination of aesthetic options.



CONCEPT



DEEP PLANKED



GROOVED



HEAVY EMBOSSED



MICRO PLANKED



STRIATED

TOTALCLAD SPECIFICATIONS

Vertical Wall Installation

Lengths*: 8' - 52'

Width: 42"

Thickness/R-Value/U-Factor @ 35° F:

2"/R17.5/U0.059

2.5"/R21.9/U0.046

3"/R26.2/U0.039

4"/R35.0/U0.029

Exterior Face: Embossed or smooth finish, depending on profile

* Lengths vary by profile, embossing, and orientation. Thermal values may vary by plant location. Please contact CENTRIA for specifics.

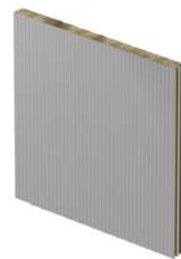
TOTALCLAD FEATURES & BENEFITS

- All-weather, easy installation and light weight provide reduced labor and framing costs
- Available 42" width makes it ideal for industrial and commercial facilities, arenas and manufacturing applications
- Excellent for both interior and exterior applications
- Concealed clips and fasteners provide a clean, uninterrupted appearance
- Double tongue-and-groove joinery and thermal break provide superior weather resistance and eliminate thermal shorts

Visit CENTRIA.com for complete technical details.

TOTALCLAD MINERAL WOOL

TotalClad MW IMPs replace foam insulation with non-combustible mineral wool insulation for enhanced fire protection with good thermal performance. Used for both interior and exterior applications, TotalClad MW achieves 1-, 2- and 3-hour fire ratings depending upon panel thickness.



TOTALCLAD MW STRIATED



TOTALCLAD MW MICRO PLANKED



TOTALCLAD MW HEAVY EMBOSSED

TOTALCLAD MW SPECIFICATIONS

Vertical Wall Installation

Lengths: 8' - 40'

Width: 42" and 43"

Thickness/R-Value/U-Factor @ 35° F:

4"/R14.5/U0.065

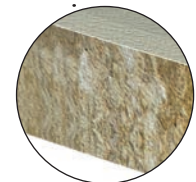
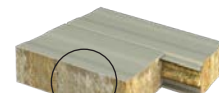
5"/R18.2/U0.053

6"/R21.8/U0.044

7"/R25.5/U0.038

8"/R29.1/U0.034

Exterior Face: Micro Planked or Striated with an embossed finish or Heavy Embossed



MINERAL WOOL



CS-200



CS-210



CS-220



CS-260



CS-610



CS-612



CS-613



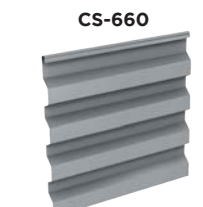
CS-620



CS-623



CS-630



CS-660

FEATURES & BENEFITS

- Distinctive ribs for deep shadow relief
- Panels may be installed vertically or horizontally
- Widths of 12" or 16" depending on panel model
- Lengths up to 30'
- Limit lengths to 20' for aluminum panels
- Concept Series panels feature a common-lock joint that allows panels to be mixed for custom-like aesthetics
- Available with stucco-embossed or smooth finishes
- Concealed clips and fasteners
- Concept Series is available with an optional extended leg for attachment in lieu of clips for vertical applications
- Cost-effective, all-weather installation capability shortens installation time; permits fast-track scheduling
- Made of 100% recyclable metal and non-combustible
- Variety of substrate options including galvanized steel, aluminum, Galvalume, stainless, and zinc

Visit CENTRIA.com for complete technical details.



CONCEPT SERIES GALLERY

Explore examples of buildings clad with Concept Series panels.



IW SERIES

BEAUTIFUL COMBINATIONS

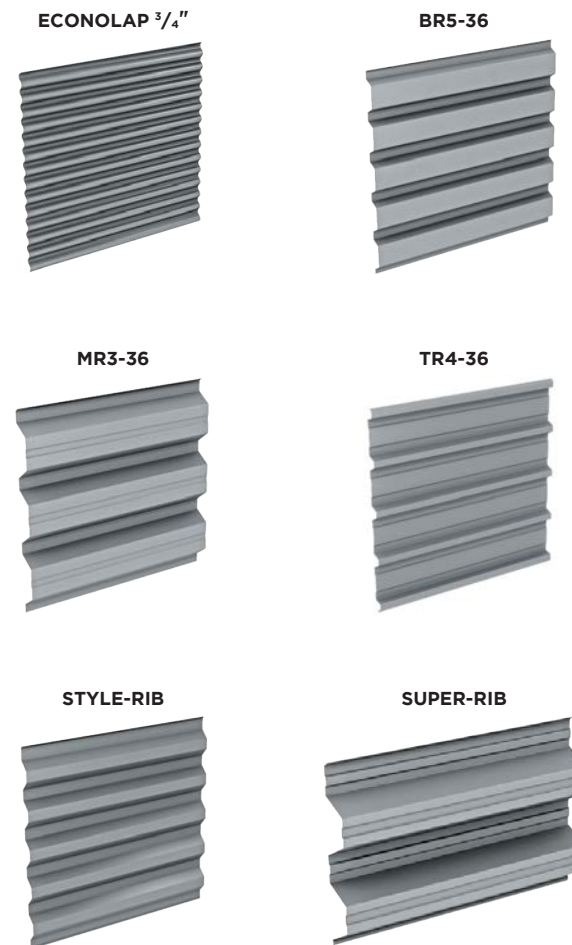
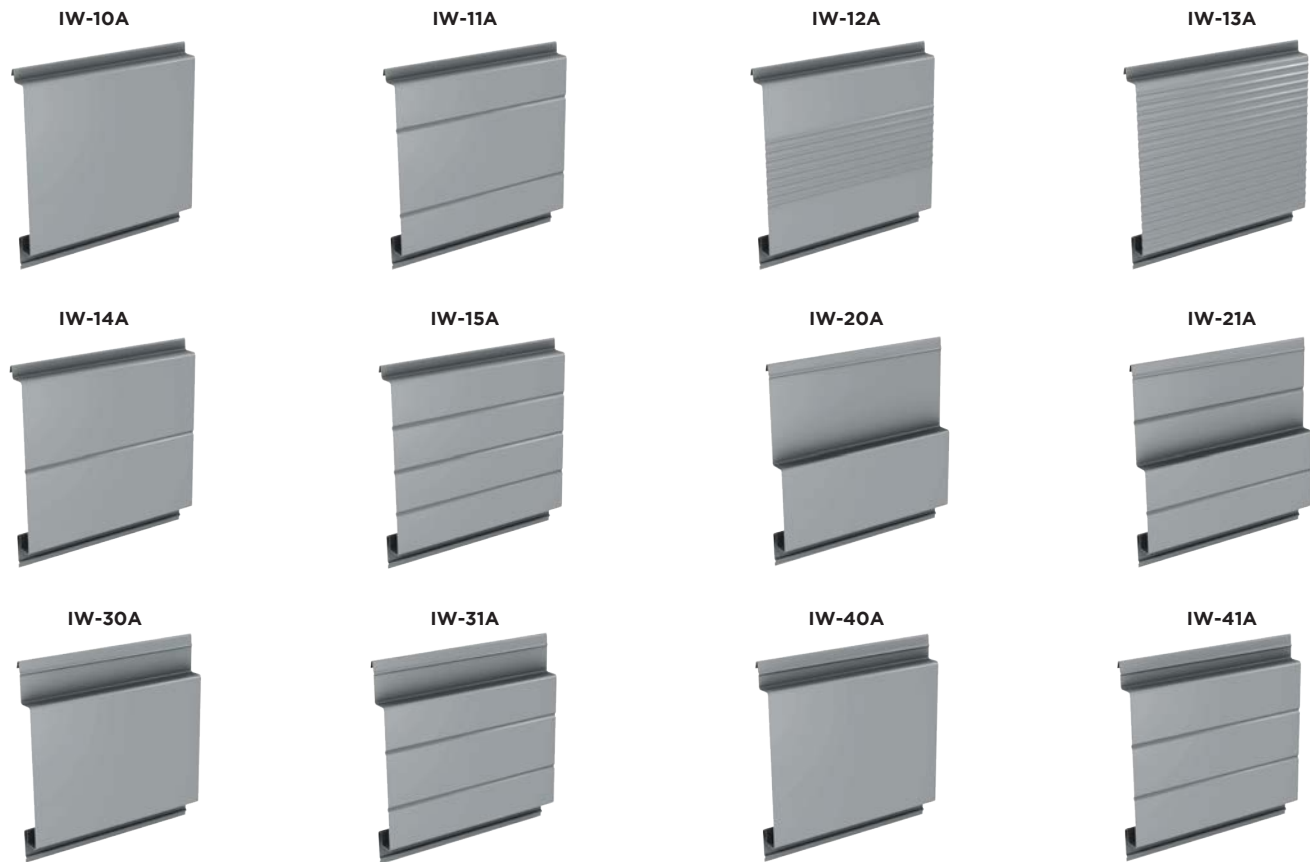
Unique visual effects are possible with the IW Series — featuring concealed fasteners for a clean, unbroken aesthetic. Available in stucco-embossed or smooth finishes, the panels also feature a common-lock joint design allowing panels to be mixed across a façade.



EXPOSED FASTENER PANELS

CLASSIC ALL-PURPOSE METAL PANELS

The original metal panels for buildings, CENTRIA exposed fastener panels provide ultimate flexibility with panels that can be used as exterior or interior walls, roofs, or soffits. Exposed fastener panels can be installed in any weather to enable faster scheduling.



FEATURES & BENEFITS

- Highly versatile panels for use as exterior or interior walls, roofs, and soffits
- Widths from 24" to 36" depending on panel model
- Depths range from 3/4" to 4" deep depending on panel profile
- Lengths up to 40'
- Limit lengths to 20' for aluminum panels
- Ribs can be run horizontally or vertically
- Excellent negative wind load properties
- All-weather installation capability minimizes delays; permits fast-track scheduling
- Available with stucco-embossed or smooth finishes
- Made of 100% recyclable metal
- Non-combustible
- Variety of substrates including galvanized steel, aluminum, and stainless

Visit CENTRIA.com for complete technical details.

Visit CENTRIA.com for complete technical details.

FEATURES & BENEFITS

- Horizontal or vertical wall installation
- 12" Widths and Lengths up to 25'-0"
- Limit lengths to 20' for aluminum panels
- Concealed fastener design minimizes exposed fasteners
- Clean, unbroken appearance
- All panels are interchangeable because of the common-lock joint design; allows for appealing visual effects
- Cost-effective, all-weather installation capability shortens installation time; permits fast-track scheduling
- Available with stucco-embossed or smooth finishes
- Made of 100% recyclable metal and Non-combustible
- Optional pencil beads for enhanced stiffness
- Variety of substrate options including painted G90 galvanized steel and painted aluminum

IW SERIES GALLERY

Explore examples of buildings clad with IW Series panels.



EXPOSED FASTENER GALLERY

See project examples incorporating CENTRIA Exposed Fastener panels.



ECOSCREEN®

SCREEN. VENTILATE. PROTECT. IN STYLE.

Exposed fastened CENTRIA EcoScreen perforated screenwall panels produce an airy aesthetic and a distinctive way to blend industrial and other applications with their surroundings. The perforation pattern is available in a wide variety of options to allow air and natural light to pass through, while providing additional security and unique aesthetic appeal.



ECOSCREEN®

PARADIGM™

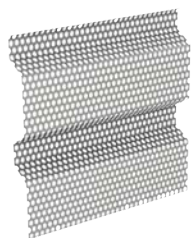
WHAT YOU WANT IN A METAL RAINSCREEN PANEL

CENTRIA Paradigm makes it possible to create truly unique custom profiles in almost unlimited color and finish options. The result is design flexibility and control, as well as a creative way to add distinctive custom accents to your next project. For more information, contact a CENTRIA sales representative.



PARADIGM™

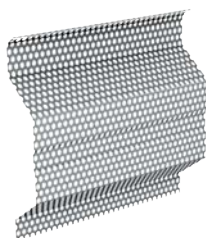
ECOSCREEN:
BR5-36



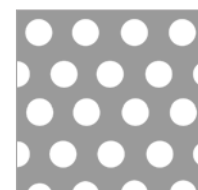
ECOSCREEN:
ECONOLAP 3/4"



ECOSCREEN:
MR3-36



REVERSE PATTERN

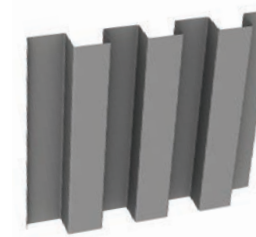


← Panel Width →

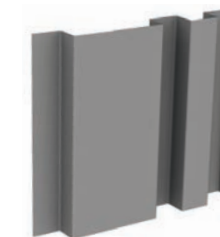
PCE-02



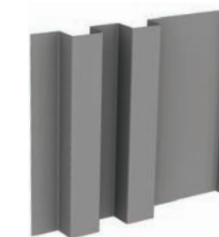
PCE-06



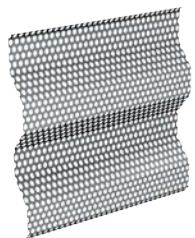
PCE-07



PCE-08



ECOSCREEN:
STYLE-RIB



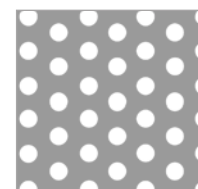
ECOSCREEN:
CS-260



ECOSCREEN:
CS-660

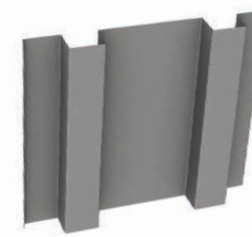


STAGGERED PATTERN

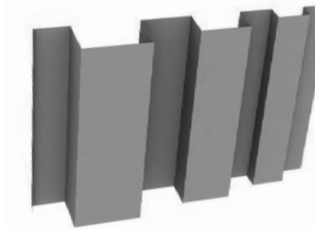


← Panel Width →

PCE-09



PCE-11



PCE-14



FEATURES & BENEFITS

- Provides 10-40% open area depending upon panel profile and perforation patterns (consult CENTRIA)
- Far more affordable option compared to woven metal
- Perfect for open structures such as parking garages, stairwells, and rooftop screen walls
- Promotes airflow and penetration of natural light
- Shades and reduces glare
- Made of 100% recyclable metal & non-combustible
- Available painted aluminum or stainless substrates
- Widths from 12" to 36" depending on panel model and lengths up to 40' for stainless panels.
- Limit lengths to 20' for aluminum panels

PERFORATION PATTERN OPTIONS

OPEN/FREE AREA PERCENTAGE	PATTERN	DIAMETER	SPACING
10%	Reverse	1/8"	3/8"
23%	Reverse	1/8"	1/4"
23%	Reverse	1/4"	1/2"
30%	Staggered	1/8"	7/32"
33%	Staggered	3/16"	5/16"
40%	Staggered	1/8"	3/16"
40%	Staggered	3/8"	9/16"

FEATURES & BENEFITS

- Designer-customized panel profile shapes permit variation in design and shadow relief
- Vertical or horizontal installation
- Custom-engineered panels with calculations and Professional Engineer stamps available on request
- All-weather installation capability minimizes delays and permits fast-track scheduling
- In-house designers and engineers to assist in making your product vision a reality
- Made of 100% recyclable metal
- Non-combustible
- Wide variety of metal substrate options
- Lengths up to 18'

Visit CENTRIA.com for complete technical details.



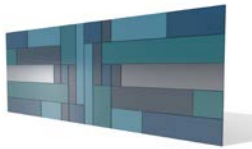
PURE METAL RAINSCREEN IN ITS FINEST FORMS

CENTRIA and NexGen introduce Intercept+, a revolutionary all-metal modular rainscreen wall panel system that allows for design versatility by incorporating different substrates, depths, tapers, slopes, and perforations. For use with or without CENTRIA MetalWrap, these panels deliver the protection required in an architecturally imaginative system. Intercept+ is available in 4 different yet interchangeable design schemes.

ENTYRE™

Flat and elegant, Intercept+ Entyre provides a classic metal exterior aesthetic.

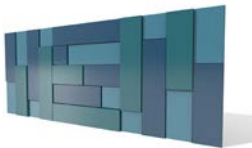
- Single depth walls
- Standard flat product
- All four corners are the same depth
- 1-3/8" deep



LVLZ™

Make your next project stand out, literally. Achieve changes in panel depth in increments of 1/2" up to 4" with the seamless integration of LVLZ and Entyre panels.

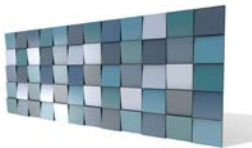
- Multiple depth walls
- Single depth per panel
- All four corners are the same depth
- 2", 2-1/2", 3", 3-1/2", or 4"
- All LVLZ depths and Entyre panels can be combined on the same building elevation



RZR™

Showcase dramatic variation and wall relief with unique sloped depth in either horizontal or vertical directions with RZR panels. Create multiple-depth walls as well as a variety of depths per panel.

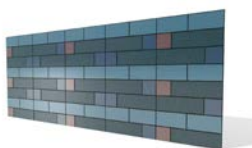
- Multiple depth per panel — two corners of different depths
- RZR integrates seamlessly with LVLZ and Entyre for more dramatic plane changes



HLZ

Intercept+ HLZ add a screening effect to blend industrial applications with surroundings. Use HLZ panels to mask building equipment, control light, or to create an interesting backlit effect.

- Integrates with Entyre, LVLZ, and RZR
- Provides ventilation and security
- Multiple perforated pattern options



PURE IMAGINATION

Watch how Intercept+ is making façade design fun again.

FEATURES & BENEFITS

- Made with no plastics, highly recyclable
- Lengths up to 12' depending on panel type
- Widths up to 48" depending on substrate
- Aluminum panel available in an assortment of painted and anodized surface finishes
- Easy and intuitive installation
- Non-combustible
- Open joint design for maximum ventilation and cavity drying
- 100% recyclable
- Engineered and tested to assure compliance to building code as a non-combustible, pressure-equalized rainscreen system per AAMA 508

Visit CENTRIA.com for complete technical details.

INTERCEPT COLOR CHART



STRUCTURAL STANDING SEAM METAL ROOF SYSTEMS

A building enclosure isn't complete without a high-performance roof and CENTRIA has you covered with its line of high-quality standing seam metal roofs.

SRS 3

CENTRIA SRS sets the standard for high-performance structural standing roofs. Its outstanding performance is due to interlocking design, mechanically seamed joinery, and concealed clips. Provides unmatched weather protection while accommodating thermal expansion and contraction. Plus, the SRS roof system is available in crimp-free curved panels.

Lengths: 48' factory formed or up to 220' field formed*
Widths: 12", 16", and 18"
Height: 3"
Substrates: Galvalume, Galvanized Steel, Aluminum
Minimum Roof Slope: 1/2: 12 w/o endlaps
 1: 12 w/endlaps

* Contact CENTRIA for longer length options



RAINSCREEN CLADDING DESIGN OPTIONS

TAKE YOUR DESIGN FROM FABULOUS TO FANTABULOUS



SDP

CENTRIA SDP provides a versatile, economical solution for low slope roofs with outstanding resistance to wind loads and is designed for application over open purlins and blanket insulation.

SDP175

Length: 40' **
Widths: 16" and 18"
Height: 1 3/4"
Substrates: Galvalume, Galvalume Plus™, Galvanized Steel

Minimum Roof Slope: 3: 12



SDP200

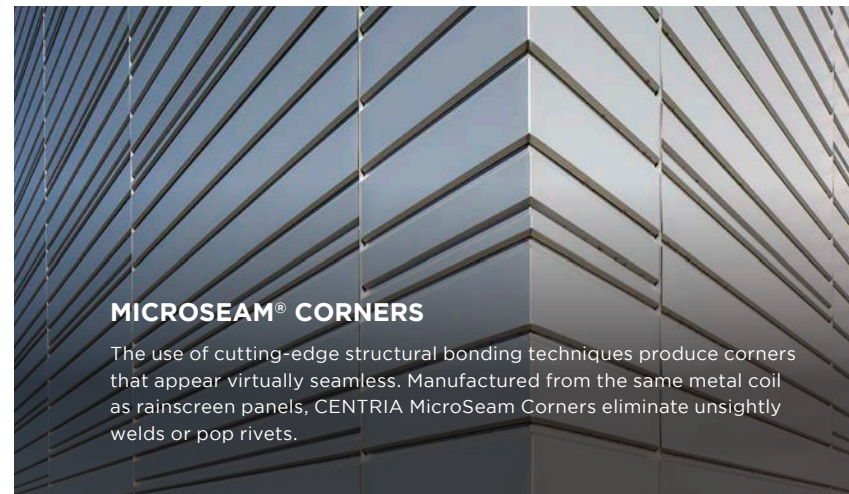
Length: 48' **
Widths: 16" and 18"
Height: 2"
Substrates: Galvalume, Galvalume Plus™, Galvanized Steel

Minimum Roof Slope: 1/2: 12 w/o endlaps
 1: 12 w/endlaps



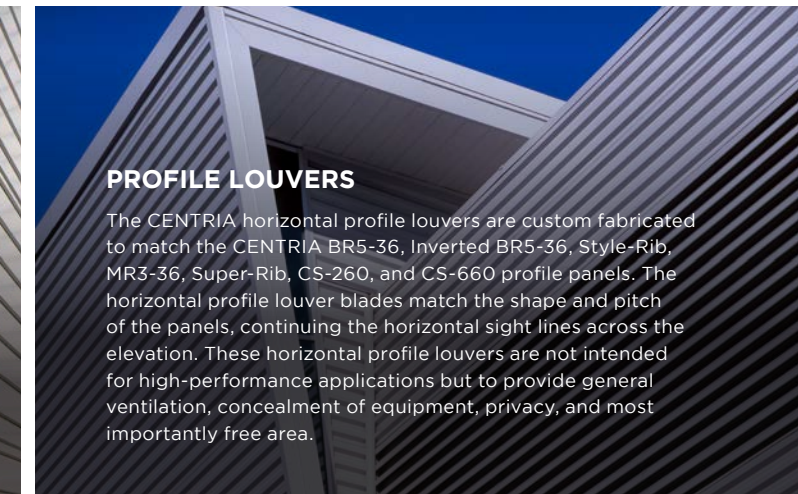
** Consult CENTRIA for longer lengths.

Visit CENTRIA.com for complete technical details.



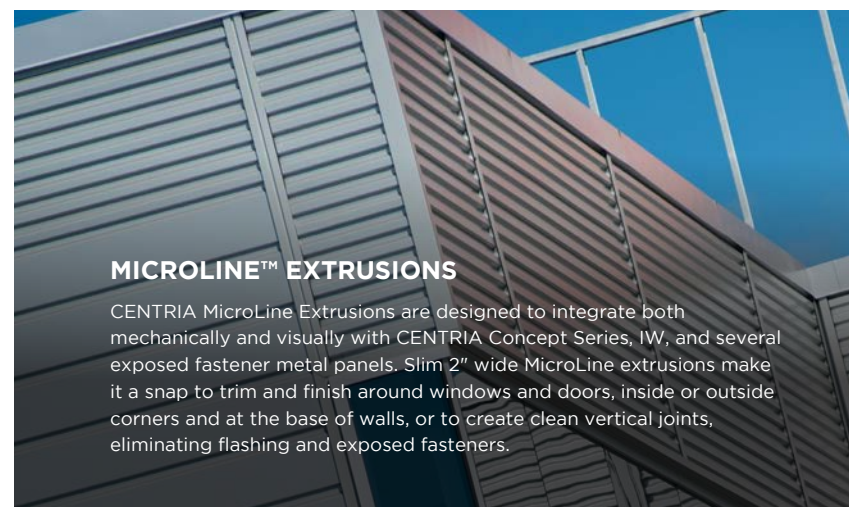
MICROSEAM® CORNERS

The use of cutting-edge structural bonding techniques produce corners that appear virtually seamless. Manufactured from the same metal coil as rainscreen panels, CENTRIA MicroSeam Corners eliminate unsightly welds or pop rivets.



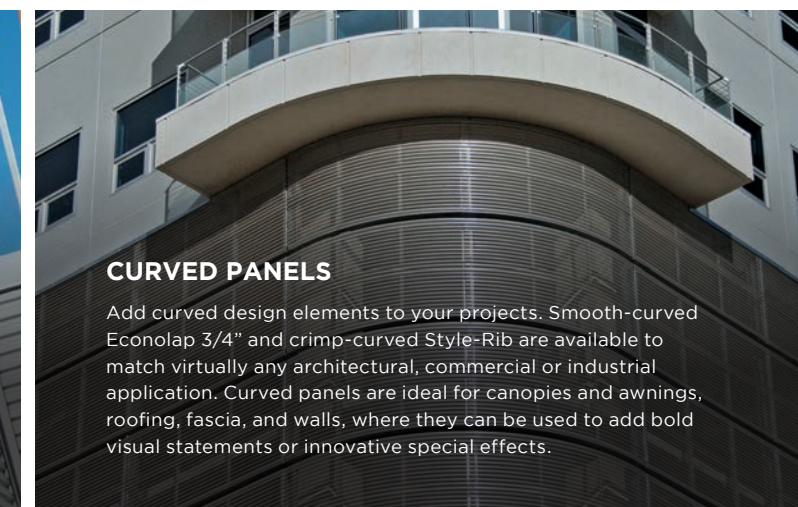
PROFILE LOUVERS

The CENTRIA horizontal profile louvers are custom fabricated to match the CENTRIA BR5-36, Inverted BR5-36, Style-Rib, MR3-36, Super-Rib, CS-260, and CS-660 profile panels. The horizontal profile louver blades match the shape and pitch of the panels, continuing the horizontal sight lines across the elevation. These horizontal profile louvers are not intended for high-performance applications but to provide general ventilation, concealment of equipment, privacy, and most importantly free area.



MICROLINE™ EXTRUSIONS

CENTRIA MicroLine Extrusions are designed to integrate both mechanically and visually with CENTRIA Concept Series, IW, and several exposed fastener metal panels. Slim 2" wide MicroLine extrusions make it a snap to trim and finish around windows and doors, inside or outside corners and at the base of walls, or to create clean vertical joints, eliminating flashing and exposed fasteners.



CURVED PANELS

Add curved design elements to your projects. Smooth-curved Econolap 3/4" and crimp-curved Style-Rib are available to match virtually any architectural, commercial or industrial application. Curved panels are ideal for canopies and awnings, roofing, fascia, and walls, where they can be used to add bold visual statements or innovative special effects.

CENTRIA ROOF GALLERY

See project examples incorporating CENTRIA SRS or SDP roof systems.



EXPOSED TECHNICAL DETAILS

Explore your design options online here.



COLOR AND FINISH

WHERE THE REAL MAGIC BEGINS

Beyond solid color, only CENTRIA offers a full range of special effects coatings to expand possibilities for the expression of color and finish in architectural design.

Sundance Series - a pearlescent finish featuring metallic flakes or mica that shimmers under sunlight in a wide range of colors

Celestial Effect Luminous Series - a deep luminous finish with gold or silver flakes added for unrivaled brilliance in a curated palette of hues

Allura Earth Series - a select range of earthy hues in a soft and natural matte finish

Kolorshift Iridescent Series - a palette of coatings that shift in hue according to viewing angle and direction of sunlight

Impressions® - accurately emulate beautiful natural wood finishes and specialty metals without the cost or ongoing maintenance requirements of the real thing



A WORLD OF COLOR

CENTRIA offers the most standard colors in the industry. Explore our color selector to find the color and/or special effect coating perfect for your design.

DESIGN ASSISTANCE

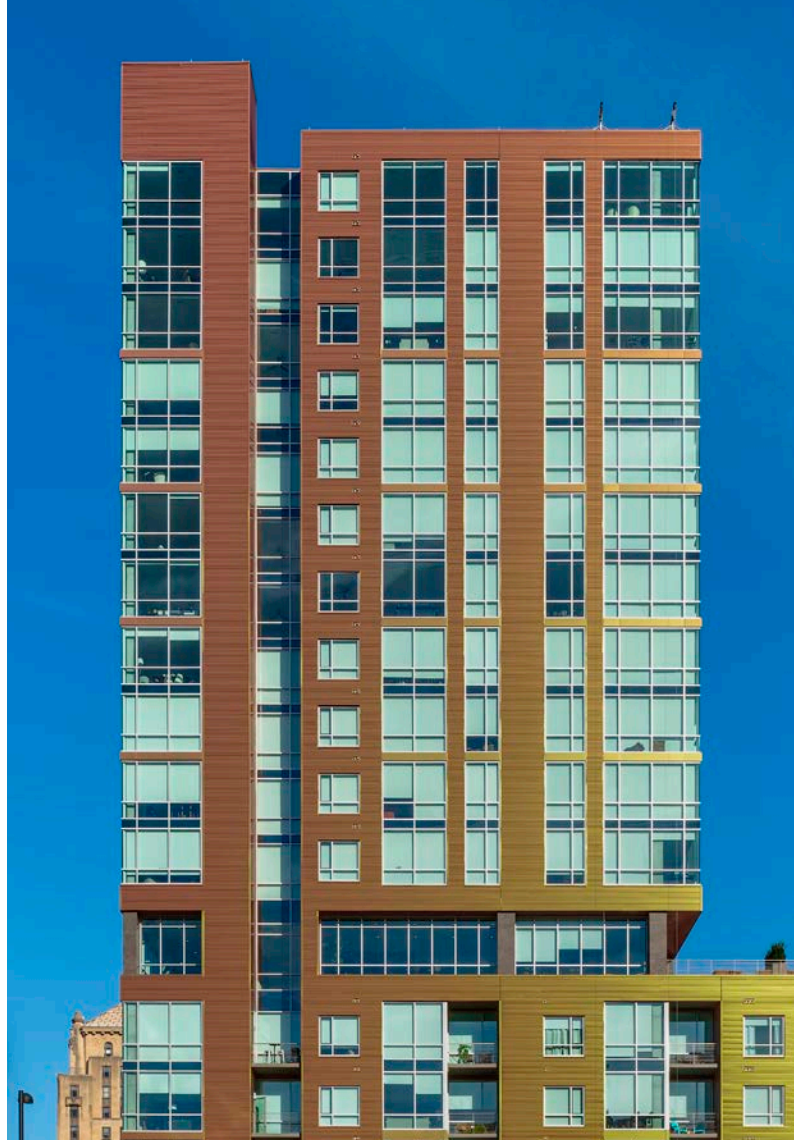
CENTRIA is available at the onset of your project to help design a wall and/or roof system that meets your unique vision and performance requirements - with multiple panel types, integrated components, and other dynamic product options.

SPECIFICATION WRITING GUIDANCE

You can rely on CENTRIA for clear and concise specifications and specification writing guidance to ensure that what you expect for your building is precisely what you receive.

PREMIER INSTALLERS

To ensure top quality, your building envelope is installed by a CENTRIA-approved installing contractor.



FAÇADE ENGINEERING

CENTRIA façade engineers consult closely with your team and provide complete custom structural drawings and details to maximize efficiency and performance of your CENTRIA high-performance building envelope.

QUALITY CONTROL

CENTRIA boasts stringent quality controls to offer you legendary aesthetics and long-term performance.



TIME TO FIND NEW FREEDOM TO CREATE

Watch this introductory video and learn how CENTRIA helps you Find New Freedom to Create.



FINISHES & SUBSTRATES

PANELS	FINISHES									SUBSTRATES			
	Fluorofinish®	Duragard	Duragard Plus	Sundance Mica	Sundance AM Metallic	Versacor Elite PF, MX, AM	Kolorshift	Allura	Celestial Effects	G-90 Galvanized	Galvalume Galvalume Plus	Aluminum	Zinc

FORMAWALL | The Complete Wall System

	Fluorofinish®	Duragard	Duragard Plus	Sundance Mica	Sundance AM Metallic	Versacor Elite PF, MX, AM	Kolorshift	Allura	Celestial Effects	G-90 Galvanized	Galvalume Galvalume Plus	Aluminum	Zinc
FW Dimension Series	X	X	X	X	X	X	X	X	X	X			
FWDS Graphix	X	X	X	X	X	X	X	X	X	X			
Formavue Windows	X	X	X	X	X				X			X	
FWDS Louvers	X	X	X	X	X				X			X	
FWDS Sunshades	X	X	X	X	X				X			X	

VERSAWALL & VERSAPANEL | Commercial/Industrial Wall & Roof Systems

	Fluorofinish®	Duragard	Duragard Plus	Sundance Mica	Sundance AM Metallic	Versacor Elite PF, MX, AM	Kolorshift	Allura	Celestial Effects	G-90 Galvanized	Galvalume Galvalume Plus	Aluminum	Zinc
Versawall & Versapanel	X	X	X	X	X	X	X	X	X	X			

Rainscreen SYSTEMS | Flexibility in Aesthetics and Performance

	Fluorofinish®	Duragard	Duragard Plus	Sundance Mica	Sundance AM Metallic	Versacor Elite PF, MX, AM	Kolorshift	Allura	Celestial Effects	G-90 Galvanized	Galvalume Galvalume Plus	Aluminum	Zinc
Concept Series	X	X	X	X	X	X	X	X	X	X	X	X	X
IW Series	X	X	X	X	X	X	X	X	X	X	X	X	
EcoScreen	X	X	X	X	X			X	X			X	
Exposed Fastener Panels	X	X	X	X	X	X	X	X	X	X	X	X	
Paradigm	X	X	X	X	X	X	X	X	X	X	X	X	X
Profile Louvers	X	X	X	X	X	X	X	X	X	X	X		
Liner Panels	X	X	X	X	X	X	X	X		X	X		

SRS | Structural Standing Seam Roof Systems

	Fluorofinish®	Duragard	Duragard Plus	Sundance Mica	Sundance AM Metallic	Versacor Elite PF, MX, AM	Kolorshift	Allura	Celestial Effects	G-90 Galvanized	Galvalume Galvalume Plus	Aluminum	Zinc
SRS 3	X	X	X	X	X	X	X			X	X	X	
SDP 175	X	X	X	X	X		X	X	X	X	X		
SDP 200	X	X		X	X		X	X	X	X	X		

Additional Substrate details

- Standard G-90 hot-dip galvanized steel conforming to ASTM A924 and ASTM A653 structural quality
- Galvalume® steel, unpainted hot-dip coated with aluminum-zinc alloy conforming to ASTM A924 and ASTM A792
- Aluminum alloy 3003 or 5052 and for standing seam roof panels, 3004 WITH Aluminum is 3003 alloy except for SRS 3, which is 3004 alloy, conforming to ASTM B209., available in smooth surface as a substrate

Galvalume® steel not available with Versacor Elite.

Certain panel profiles and options may not be available in all finish and gauge combinations. Contact CENTRIA for availability.

¹Stainless is available for face elements only and not liner elements.



DESIGN TO PERFORM

Architecture that is greater than the sum of its parts comes down to the design of those parts. From conception to installation, every part of a CENTRIA high-performance metal enclosure is engineered, tested, and refined to perfection for architecture that excels, sustains, and inspires.

CENTRIA.com



© 2024 CENTRIA, a Nucor Company.

All rights reserved.

5_29_24 #0206209991107